

CONTROLLED ENVIRONMENT CHAMBER

Model 5532

Designed to accommodate equipment and material requiring excellent visibility, precision, stability and a large internal work area (13 cu. ft., 368 l). Independently maintain humidity from <10 to >98% RH and temperature from 64-135°F (18-55°C). Uses include weighing, testing, storage, fabrication and aging in biomedical, pharmaceutical, automotive, electronic, electrostatic, DOD, university research and other applications.

Features:

- Microprocessor PID control
- Ramp/Soak functions
- Computer software package
- 3/8" Doors, 1/2-turn latches
Front: 32"x14" (81x36 cm)
Side: 14"x4" (36x10 cm)
- 8" Ports with gloves
- Fluorescent lighting
- Internal fan and AC power
- 3/8" clear & white acrylic with polished PS30 welded seams
- Thermoelectric cooling & electric heating systems
- High capacity desiccant/pump & ultrasonic humidity systems
- Optional: 3rd parameter monitoring, metal free work area & custom configurations



Performance Characteristics:

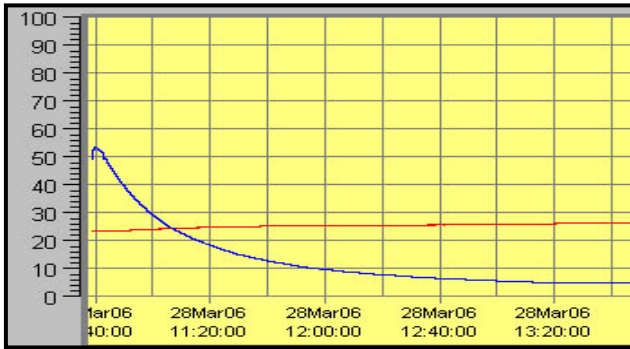
Chamber performance pertains to the ability of the chamber to reach and then hold a given humidity level along with humidity gradients. It is not only a function of the chamber, but temperature, operating systems and controllers used. The following charts show the time typically required to decrease and increase humidity (Blue = RH, Red = T °C) plus humidity gradients using the optional CALCOMMS software package.



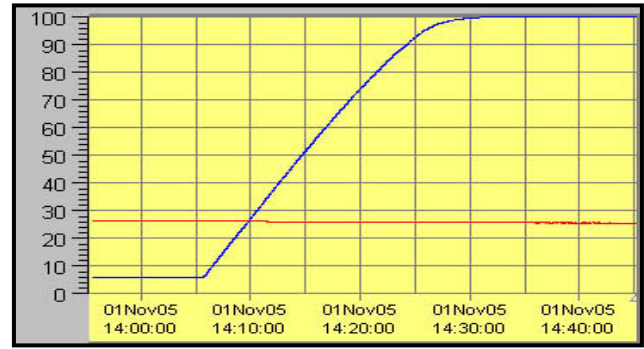
electro-tech systems, inc.

3101 Mt. Carmel Avenue, Glenside, PA 19038 • Tel: (215) 887-2196 • Fax: (215) 887-0131

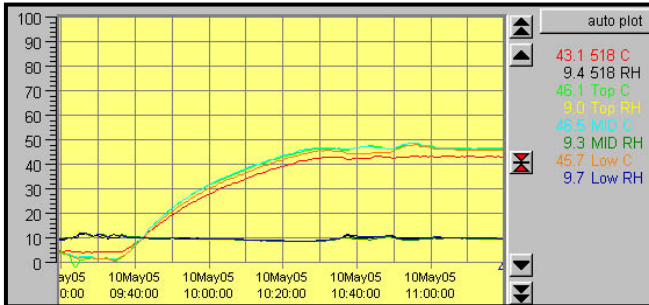
www.electrotechsystems.com



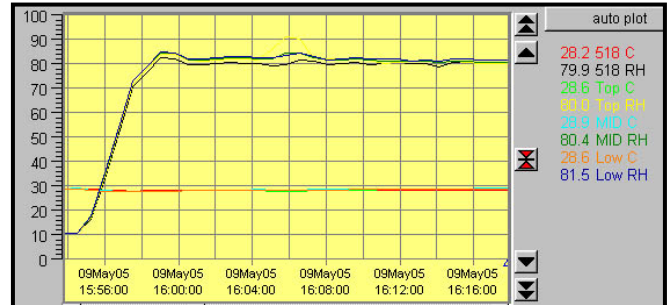
Rate of decrease



Rate of increase



Increase temperature, constant low RH



Increase RH, constant temperature

Specifications:

Chamber:

Material:

3/8" (6mm) clear & white acrylic

Construction:

PS30 polished welded seams

Doors: 3/8" (9mm) clear acrylic, 1/2-turn latches

Seal:

1/4" (6mm) Poron, non-setting gasket

Gloves: (when configured)

.018" (0.5mm) replaceable hands, natural rubber, accordion sleeves, 8" (20.3cm) ports

Operating Range:

Humidity: <10 to >98%

Temp: (Std) 64-135°F (18-55°C), 55°F/12°C (Opt)

Controllers:

Type: 2x CAL 9500, multiple ramp/soak cycles

1x CAL 9500, opt. 3rd parameter, linear input

Resolution: 0.1%/0.1°

Set Pt. Tracking: ±0.1

Rec. Out: 0-1vdc, 0-20ma, 4-20ma

Computer IF: MODBUS proto. Via RS485-PC with W98 or higher, NT

Sensor:

Type: Temp compensated RH/Temp

RH: Capacitive film, 0 to 100%, non-condense

Temp: RTD, -40 to +140°F (-40 to 60°C)

Accuracy: ±1.5% RH @ 72°F (22°C)
±0.5°F (±0.3°C)

Fans: 2x110 cfm (6230 l/min), ON/VARY/OFF

Access Ports: (right side)

2x1/4" (6mm) Quick disconnects

1x1" (25.4mm) Hose barb

1x1 1/2" (31.4mm) cable pass through
(located on left side)

Lighting: 18W sealed fluorescent, ON/OFF sw

Dimensions:

Overall: 54"Wx25.5"Dx22"H (137x65x56cm)

Working space (useable): 39"Wx20"Dx22"H
(99x51x56 cm)

Weight: 120 lbs (55 kg)

Operating Systems:

Dehumidify: Desiccant/Pump

2.5 lb (1.1kg) CaSO₄/1.2cfm

Humidify: Ultrasonic

Capacity: Tap water or 5 gal (19 l) ext. tank

Flow rate – 0.06 cfm (max)

Heat: Electric, 500W

Cool: 150W Thermoelectric (Std), 300W (Opt)

Power:

Voltage: 115/230VAC, 50/60Hz

Current: 8-10 Amps

Warranty: One (1) year

Specifications subject to change without notice.