

HUMIDITY CHAMBER

Series 5506

High quality, 9 cu. ft. (225 l) acrylic chambers that can be configured as a GLOVE BOX, NITROGEN DRY BOX, or CONTROLLED HUMIDITY and/or TEMPERATURE ENVIRONMENT. Use for storage, conditioning, testing, handling and fabrication in electronic, electrostatic, biomedical, pharmaceutical, R&D plus other applications.

Features:

- 9 ft³ (225 l) work space
- ¼" clear & white acrylic with polished PS30 welded seams
- 12" x 12" access opening
- ½" door with ½-turn latch
- Available with or without 8" ports
- Humidity & temperature control packages
- Custom configurations



Available Humidity/Temperature Control Packages:

Series 5506 Chambers may be ordered as a freestanding enclosure, equipped with customer selected controllers and operating systems or with one of the following prepackaged systems.

Model 5506-22: Enclosure only without glove ports

Model 5506-23: Enclosure only with glove ports

Pkg. A: Full range humidity control (with temperature display)

Pkg. B: Full range humidity control system plus elevated temp (55°C max)

Pkg. C: Full range humidity and temperature control system

Pkg. D: Single point (5% RH, N₂, dry air etc.) controlled low humidity system



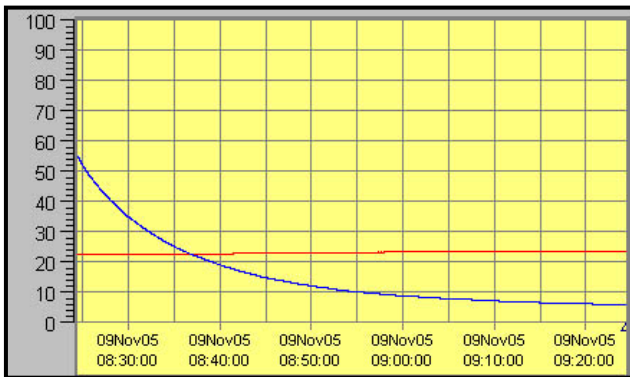
electro-tech systems, inc.

3101 Mt. Carmel Avenue, Glenside, PA 19038 • Tel: (215) 887-2196 • Fax: (215) 887-0131

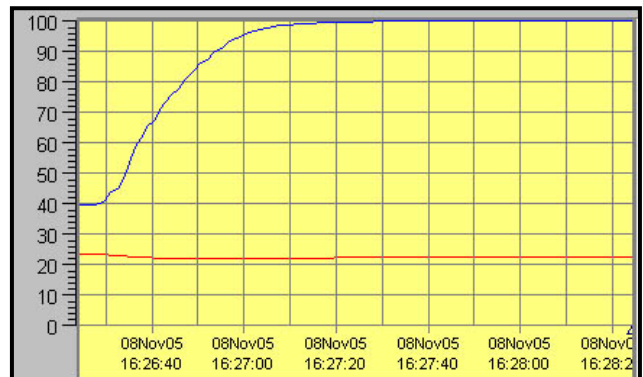
www.electrotechsystems.com

Performance Characteristics:

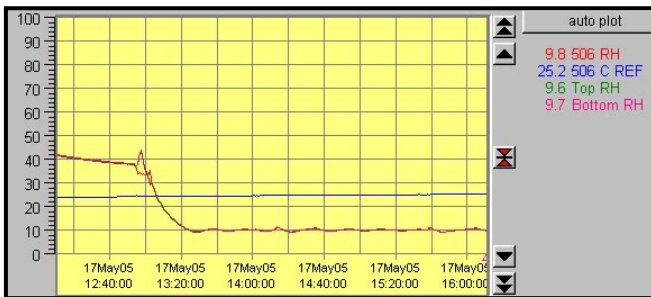
The ability of the chamber to reach and then hold a given humidity level along with humidity gradients is a function of the chamber (size, configuration etc.), temperature and the operating systems and controllers used. The following charts show the time typically required to decrease and increase humidity (Blue = RH, Red = T °C) plus humidity gradients using an ETS Model 5200-231-241 Controller with CALCOMMS software in conjunction with a Model 5461 Desiccant/Pump Dehumidification System and a Model 5462 Ultrasonic Humidification System (Option Package A).



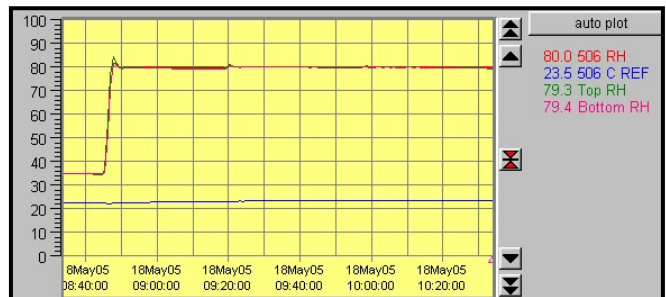
Rate of humidity decrease



Rate of humidity increase



Low humidity gradient, constant temp.



High humidity gradient, constant temp.

Specifications:

Material:

¼" (6mm) clear & white acrylic
3/8" (9mm) white left end cap

Construction:

PS30 polished welded seams

Door: (left side)

½" (12mm) clear acrylic with ½-turn latch

Seal:

¼" (6mm) Poron, non-setting gasket

Gloves: (when configured)

.018" (0.5mm) replaceable hands, nat. rubber,
accordion sleeves, 8" (20.3cm) ports

Operating Range:

Humidity: <5 – 100%

Temperature: <32 – 135°F (0-55°C)

Fan: 32 cfm (900 l/min)

(specify 115 or 230 VAC)

Access Ports: (left side)

2x¼" (6mm) hose barb

1x1" (25.4mm) Hose barb

1x½" (12mm) compression fitting

1x1½" (31.4mm) cable pass through

Dimensions:

36"Wx24"Dx18"H (92x61x46 cm)

Weight: 41 lbs (19 kg)

Warranty: One (1) Year

Specifications subject to change without notice.