

# MINI ENVIRONMENT

## Series 5503

High quality, 3.75 cu. ft. (106 l) acrylic chambers that can be configured as a GLOVE BOX, NITROGEN DRY BOX, DESICCATOR or CONTROLLED HUMIDITY and/or TEMPERATURE ENVIRONMENT. Use for storage, conditioning, testing, handling and fabrication in electronic, electrostatic, biomedical, pharmaceutical, R&D plus other applications.

### Features:

- 3.75 ft<sup>3</sup> (106 l) working space
- ¼" clear acrylic, PS30 welded seams
- 12" x 12" access opening
- ½" door with ½-turn latch
- Available with or without 6" glove ports
- Humidity & temperature control packages
- Portable and stackable
- Custom configurations



### Available Humidity/Temperature Control Packages:

Series 5503 Chambers may be ordered as a freestanding enclosure, equipped with customer selected controllers and operating systems or with one of the following prepackaged systems. Contact ETS for additional information.

- |                       |   |
|-----------------------|---|
| <b>Model 5503-00:</b> | Enclosure only without glove ports  |
| <b>Model 5503-11:</b> | Enclosure only with glove ports   |
| <b>Pkg. A:</b>        | Single point (5% RH, N <sub>2</sub> , dry air) controlled low humidity system |
| <b>Pkg. B:</b>        | Adjustable dehumidification control system (desiccant)                        |
| <b>Pkg. C:</b>        | Adjustable humidification system (ultrasonic)                                 |
| <b>Pkg. D:</b>        | Full range humidity control system  |
| <b>Pkg. E:</b>        | Full range humidity control system plus elevated temp (55°C max)              |
| <b>Pkg. F:</b>        | Complete humidity and temperature control system                              |



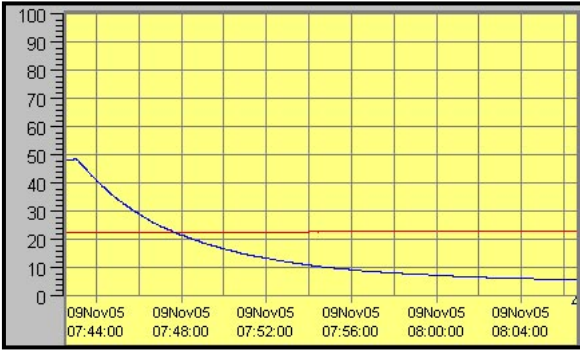
**electro-tech systems, inc.**

3101 Mt. Carmel Avenue, Glenside, PA 19038 • Tel: (215) 887-2196 • Fax: (215) 887-0131

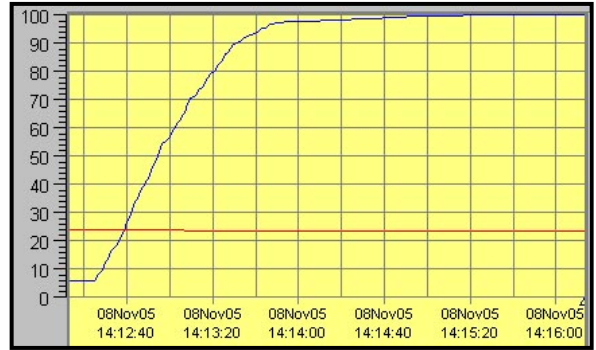
[www.electrotechsystems.com](http://www.electrotechsystems.com)

# Performance Characteristics:

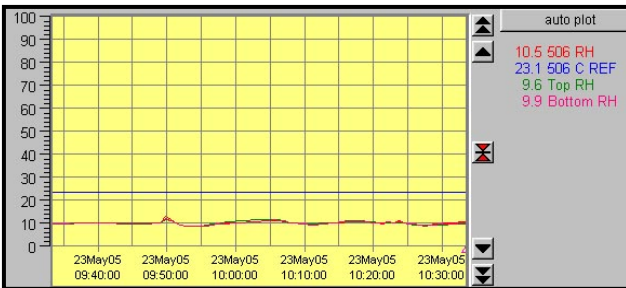
The ability of the chamber to reach and then hold a given humidity level along with humidity gradients is a function of the chamber (size, configuration etc.), temperature, and the operating systems and controllers used. The following charts show the time typically required to decrease and increase humidity (Blue = RH, Red = T °C) plus humidity gradients using an ETS Model 5200-231-241 Controller with CALCOMMS software in conjunction with a Model 5461 Desiccant/Pump Dehumidification System and a Model 5462 Ultrasonic Humidification System (Option Package D).



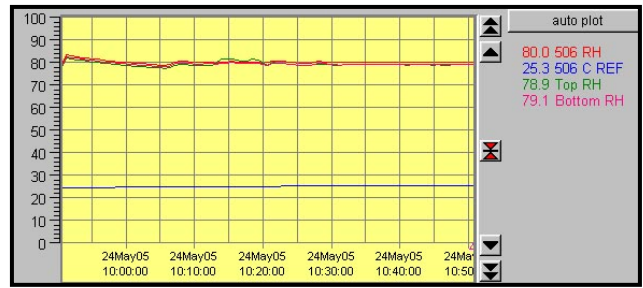
Rate of humidity decrease



Rate of humidity increase



Low humidity gradient



High humidity gradient

## Specifications:

### Material:

- 1/4" (6mm) clear acrylic
- 3/8" (9mm) left end cap

### Construction:

Wrapped, PS30 welded seams

### Door: (left side)

1/2" (12mm) clear acrylic with 1/2-turn latch

**Seal:** 1/4" (6mm) Poron, non-setting gasket

**Gloves:** (when configured)

.018" (0.5mm) latex, 6" (14.3cm) ports

### Operating Range:

Humidity: <1 – 100%

Temperature: <32 – 135 °F (0-55 °C)

### Access Ports: (left side)

2x1/4" (6mm) hose barb

1x1" (25.4mm) Hose barb

1x1/2" (12mm) compression fitting

1x1/2" (31.4mm) cable pass through

**Dimensions:** 24"Wx18"Dx15"H (61x46x38 cm)

**Weight:** 27 lbs (12.3 kg)

**Warranty:** One (1) year

*Specifications subject to change without notice.*